

Digital Inclusion Prompt Cards

Scale your solution to more users through the digital inclusion guidelines

The cards have three overall purposes:

1. To identify aspects of your digital solution that are not accessible for all.
2. To provide information on how to improve your design to make it more inclusive for everyone to use.
3. To provide easy testing of the accessibility of your solution.

Designing for people with disabilities can seem like a constraint, but can in fact result in better solutions. See w3.org for a complete overview of digital accessibility guidelines.

	See	Hear	Touch	Think	Read	Focus	Belong
Color Contrast	×						
Keyboard Access			×				
Color Blindness	×						
Consistent Navigation				×		×	
Readable Text	×				×		
Accessible Text Format	×			×	×	×	
Size of Click Targets	×		×				
Image Descriptions	×						
Audio Alternatives		×					
Error Messages				×			
Visible Location				×			
Consistent Elements				×			
Resizing of Text	×				×		
Descriptive Link Texts				×			
Enough Time	×		×	×			
Blinking and Movement				×		×	
Represent Diversity							×
Non-biased AI							×



Keyboard Access

Can the user navigate the solution using the keyboard only? Test it with Tab, Esc, Enter, Space and arrow keys.

ABILITY TO HOLD

DO



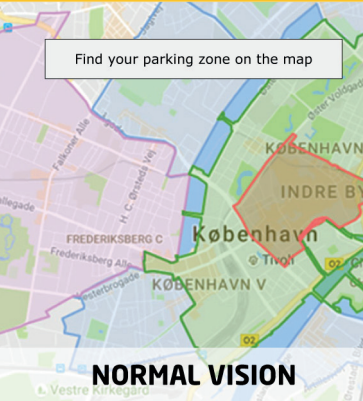
DON'T



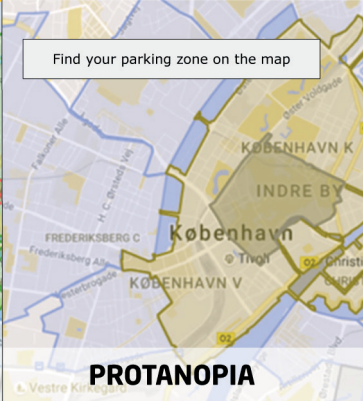
Color Contrast

Is there enough contrast between the foreground and background color?
Test it with an online contrast checker.

ABILITY TO SEE



NORMAL VISION



PROTANOPIA

Color Blindness

Does the design rely on color alone to convey information? It should not. Test with a color blindness simulator.

ABILITY TO SEE

Tools **Education** Entrepreneurship

Universal Design **Facilitation tips** More Resources

Consistent Navigation

Does the navigation look the same across the entire solution, preventing users from getting lost or confused?

ABILITY TO THINK

This is easy to read

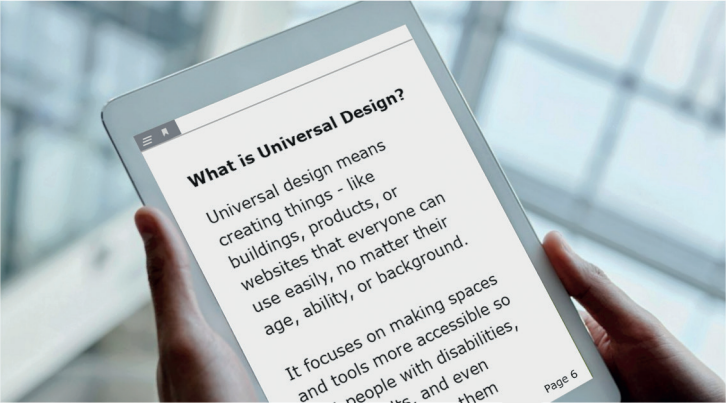
This is easy to read

This is not ...

Readable Text

Are texts easy to read, using a reader-friendly font? Avoid italics, complex words, and shortened forms.

ABILITY TO READ



Accessible Text Format

Are text blocks no more than 80 characters wide, left-aligned, and with a line-height of 1.5 lines?

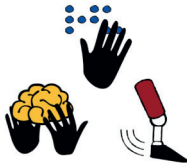
ABILITY TO READ



Who are we?

Technology Leaving No One Behind is a flagship partnership initiative at the Technical University of Denmark, dedicated to integrating inclusion and accessibility into the development of sustainable technological solutions.

Read about us



Size of Click Targets

Are the size of buttons and links at least 44 x 44 pixels, and is there sufficient space between them?

ABILITY TO HOLD

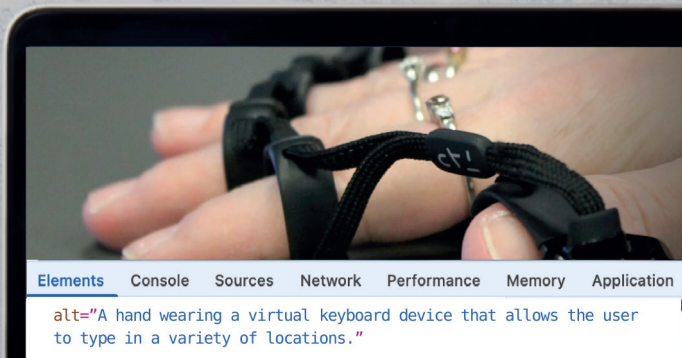


Image Descriptions

Is the content of images, videos and other non-text content described in the code using the 'Alt' tag?

ABILITY TO SEE



Audio Alternatives

Are subtitles provided for videos?
Are transcripts provided for audio clips
and multimedia content?

ABILITY TO HEAR

Contact form

Full name

123



Your full name must have at least two letters and no unusual characters

Address

Anker Egelundsvai 1

Error Messages

Does the solution validate input and offer help to correct input errors before submitting the information?

ABILITY TO THINK

Sweatshirts

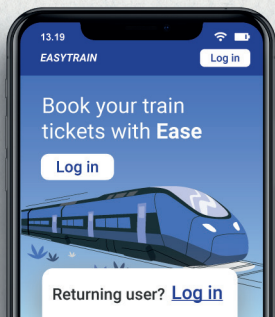


Visible Location

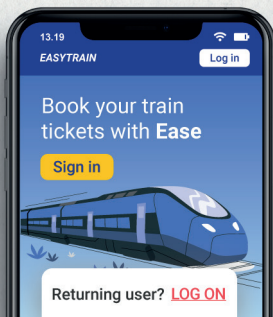
Can the user always tell where they are in the navigation structure? Use breadcrumbs or highlight current page.

ABILITY TO THINK

DO



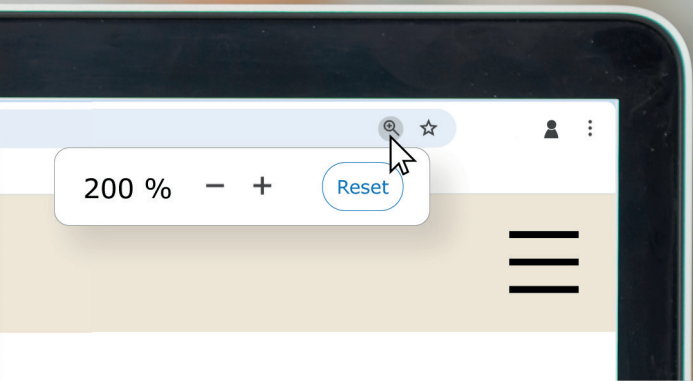
DON'T



Consistent Elements

Do elements such as buttons, icons, and links look the same everywhere, reducing cognitive load on the user?

ABILITY TO THINK



Resizing of Text

Can the text be resized to 200% without losing functionality or content?
Test with the browser zoom function.

ABILITY TO SEE



Do you want to join the action?

Sign up for our newsletter

Descriptive Link Texts

Do links and buttons have texts that describe their actions instead of generic labels? Avoid 'Click here'.

ABILITY TO THINK



Enough Time

Are users provided with enough time to read, watch, and interact with the content of the solution?

ABILITY TO THINK



Blinking and Movement

Is moving, blinking or flashing content avoided? Elements like these can be overwhelming and distracting.

ABILITY TO THINK



Represent Diversity

Do pictures show people of diversity, e.g. gender, race, age, body type, and ability? Do forms include all genders?

ABILITY TO BELONG

A stable and reliable water supply is essential for both everyday life and the future. From homes to industries, we ensure access to clean water that supports health, sustainability, and development. Water is a resource we all depend on – let's take care of it together.



Can I assist you
with anything?

Non-Biased AI

If the solution uses Artificial Intelligence, is it free of bias related to race, gender, age, and disability?

ABILITY TO BELONG

Unlock the full potential of the Digital Inclusion Prompt Cards!

Use the QR code to discover practical tips, concrete tools and step-by-step guides to integrate the Digital Inclusion Prompt Cards into your design review, workshop, or workflow.



universaldesignguide.com

Acknowledgements

The Digital Inclusion Prompt Cards are designed by DTU Skylab, as part of the program “Technology Leaving No One Behind”, enabled through partnerships with The Bevica Foundation, Disabled People’s Organisations Denmark, The Association of Young people with Disabilities (SUMH), DTU Management, and DTU Entrepreneurship.

The cards are designed using accessibility guidelines from w3.org, and pictures from freepik.com and unsplash.com.

Contact DTU Skylab on skylab.dtu.dk

BEVICA
FONDEN

DTU Entrepreneurship

DTU Skylab

SUMH

DPoD

DTU Management